



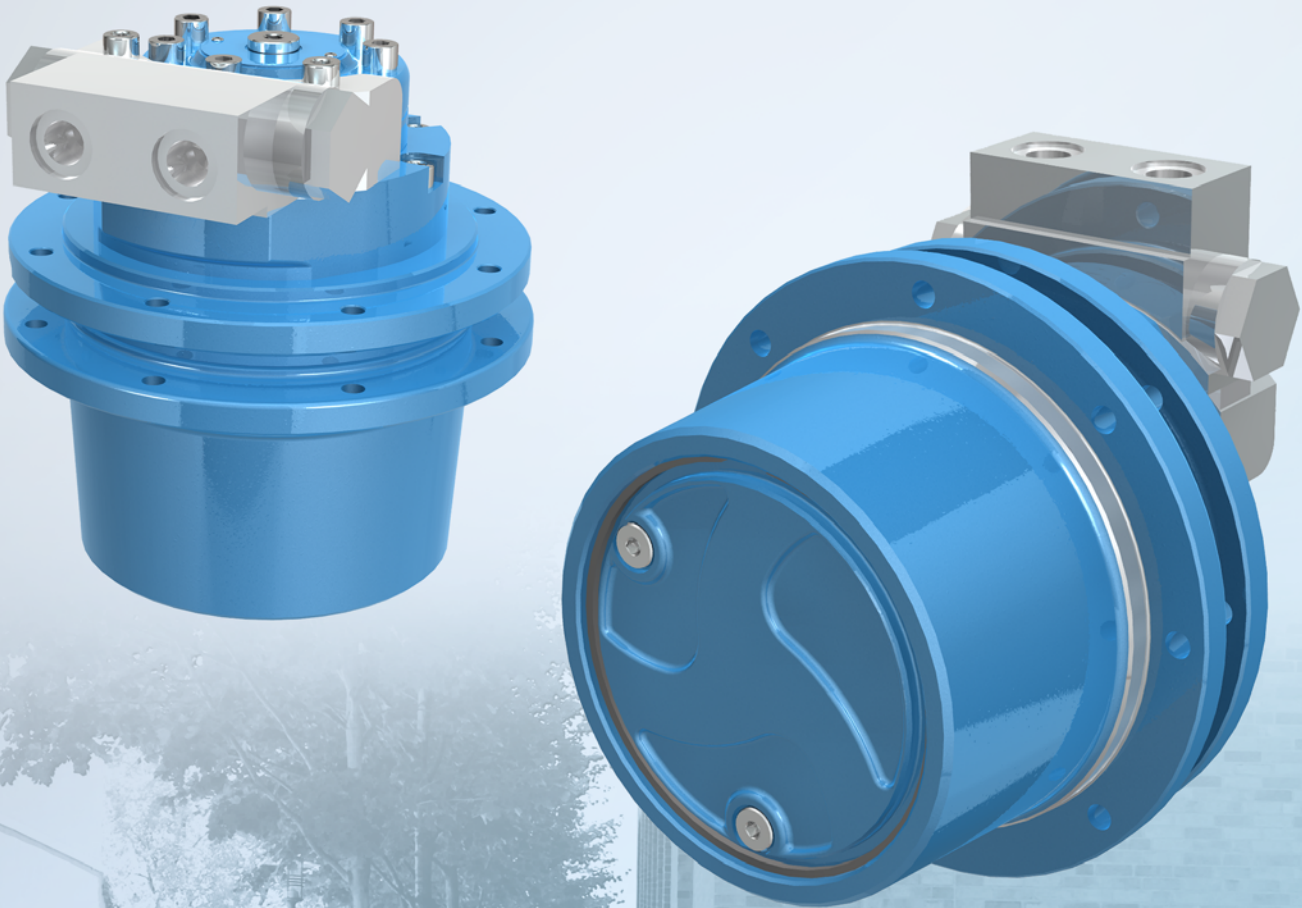
**SPICER®**

*Off-Highway Systems*

# Spicer® Track Drive Gearmotors

## Model CTM1009

Output Torque up to 2,200 Nm



*The Spicer® Track Drive Gearmotors with integrated orbital hydraulic motors are designed for direct drive of tracks with torque requirements up to 2,200 Nm. Their strength and compact designs ensure the best performance and efficiency for the translation of self-propelled crawler machines, also equipped with rubber crawlers.*



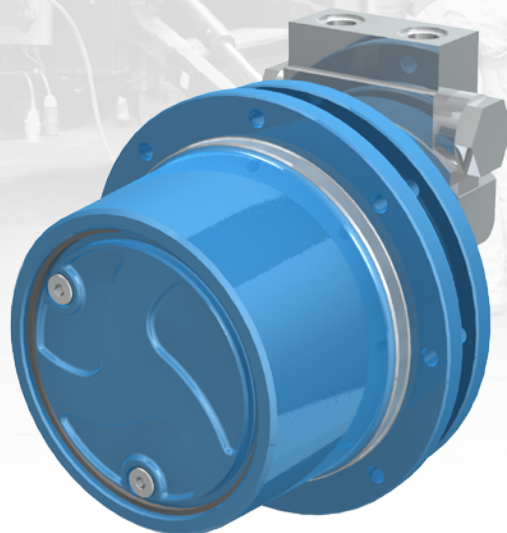
# Model CTM1009

## Track Drive Gearmotors

The Spicer® Track drive gearmotor model CTM1009 is particularly suitable for the translation of self-propelled crawler machines, also equipped with rubber tracks, with machine weights up to 1,200 kg.

Powered by an integrated Brevini® orbital hydraulic motors and motion control valves that guarantee a perfect balance between high performance, compactness and versatility

Track Drive Gearmotor Model CTM1009 Technical data	
Integrated Brevini® Hydraulic Displacement Motor Range	50 ÷ 130 cc/rev
Output Torque	1.1 kNm
Reduction Ratio	5
Machine Weight	Up to 1.2 Tons



## Spicer® Track Drive Gearmotors Range

The Spicer® Track Drive Gearmotors range is characterized by 3 sizes with different output torque up to 2.2 kNm.

A wide range of integrated Brevini® orbital hydraulic motors and motion control valves, the Spicer® Track drive gearmotor series guarantee a perfect balance between high performance, compactness and versatility, providing different functional features.

## Main features

- Internal multidisc parking brake
- High radial and axial load capacity bearings
- Integrated hydraulic motors for compact layouts
- Motion control valves with different options available
- Special sealing system designed for severe environmental conditions
- Hub and spindle made of high strength material

[dana.com/off-highway](http://dana.com/off-highway)



**SPICER®**

Off-Highway Systems

### Application Policy

Capacity ratings, features, and specifications vary depending upon the model and type of service. Application approvals must be obtained from Dana; contact your representative for application approval. We reserve the right to change or modify our product specifications, configurations, or dimensions at any time without notice.